

Installation Instructions: Converter

Code: 06836/42/40/49

Date	Revision
2.9.2024	1

Read these instructions before installation and retain for future reference



This equipment should be installed by a competent electrician

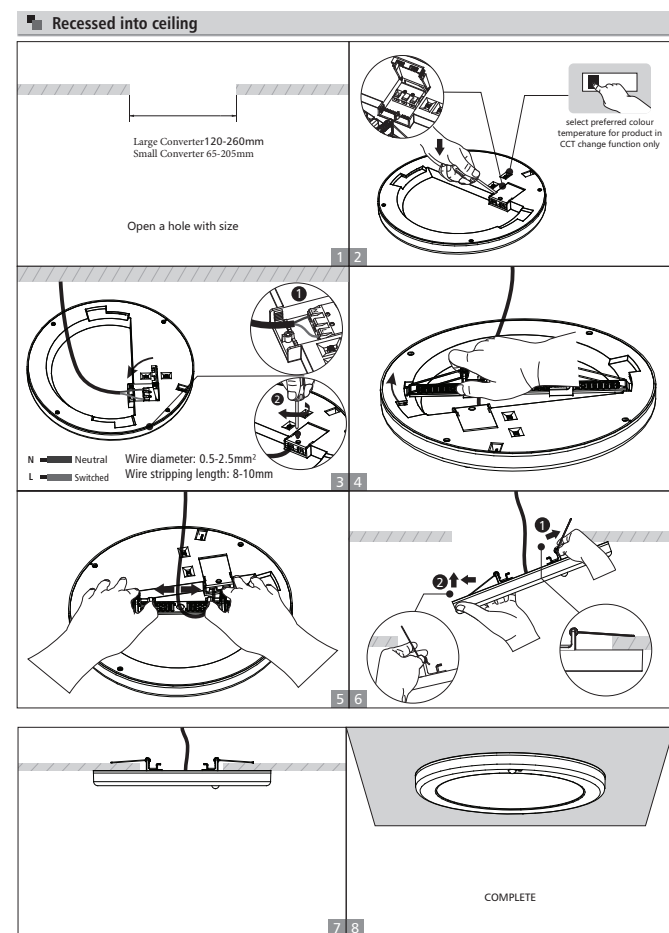
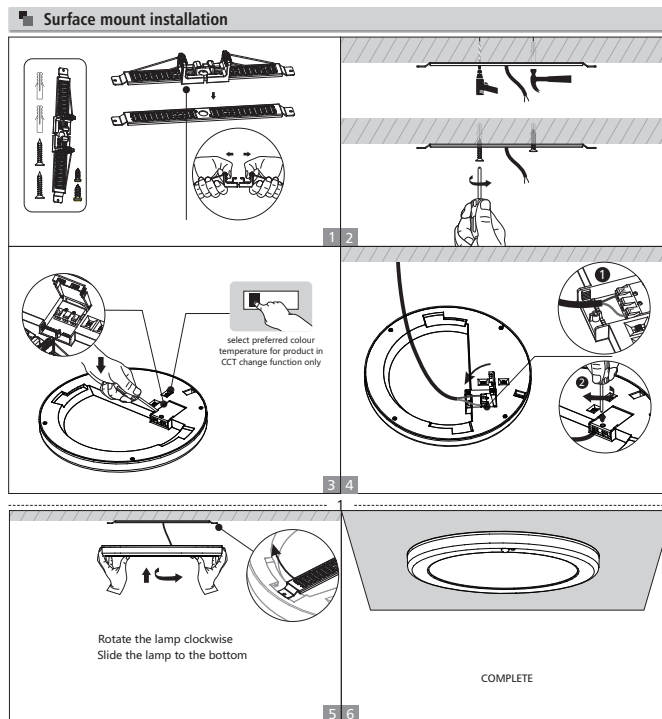
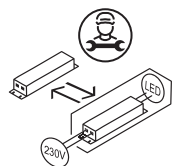
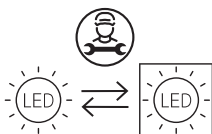
Important Information

We recommend that luminaires are installed by a qualified electrician ensuring the installation complies with current IEE wiring regulations BS7671:2018 & local building control..

- BELL will not accept responsibility for any claims arising from a poor installation.
- Do not cover with any insulation.
- Internal use only.
- IP54 Front only

This product may contain substances that can be hazardous to the environment if not disposed of properly. Electrical and electronic equipment should never be disposed of with general household waste but must be separated for its correct treatment and recovery.

Where possible recycle your packaging.



Technical Helpline
+44 (0)1924 893380

British Electric Lamps Ltd
BELL House, Foxbridge Way, Normanton Industrial Estate
Normanton, West Yorkshire. WF6 1TN

T: +44 (0)1924 893380 F: +44 (0)1924 894320
E: sales@belllighting.co.uk

www.belllighting.co.uk

Installation Instructions: Converter

Code: 06836/42/40/49

Date	Revision
2.9.2024	1

Read these instructions before installation and retain for future reference

This equipment should be installed by a competent electrician



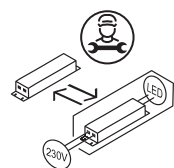
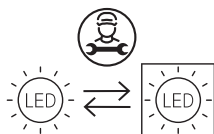
Important Information

We recommend that luminaires are installed by a qualified electrician ensuring the installation complies with current IEE wiring regulations BS7671:2018 & local building control..

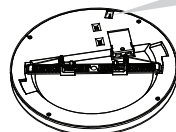
- BELL will not accept responsibility for any claims arising from a poor installation.
- Do not cover with any insulation.
- Internal use only.
- IP54 Front only

This product may contain substances that can be hazardous to the environment if not disposed of properly. Electrical and electronic equipment should never be disposed of with general household waste but must be separated for its correct treatment and recovery.

Where possible recycle your packaging.



Daylight & Microwave Sensor



DIP	1	2	3	4	5	6
ON	100%	50%	ON	ON	ON	ON
OFF	ON	ON	ON	ON	ON	ON

Factory setting

S1	S2	S3	S4	S5	S6
ON	ON	ON	ON	ON	ON
OFF	OFF	OFF	OFF	OFF	OFF

Factory settings				
Detection Area	Hold Time	Daylight Sensor	Stand-by DIM Level	Stand-by Period
100%	5S	N/A (Disable)	0%	∞

Sensor Setting

Detection Area
1
ON 100%
ON 50%

Hold Time
2
3
ON 5S
ON 3min
ON 10min

Daylight Sensor
4
ON 30lux
ON 0%
ON 20%

Stand-by DIM Level
5
ON 0%
ON 20%

Stand-by period
6
ON 15min

Detection area:

Detection area can be reduced by selecting the combination on the DIP switches to fit precisely each application.
Notice 1 : The distance test is carried out under Ta25°C, 2.5 meters surface/1.8 meters wall mounting installation height. The test result is based on the movement along the tangential direction of the sensor, and the detect distance can be adjusted by the dial switch.
Notice 2 : Infrared sensor will be affected by temperature. Too high or too low temperature may affect the detect distance or even cause failure to sensor.

Hold time:

Refers to the time period the lamp remains at 100% illumination after no motion detected.
Notice 1: The hold time can be selected by the slide switch.
The hold time counting should be started after the sensor is powered on and initialized.

Daylight sensor

The sensor can be set to only allow the lamp to illuminate below a defined ambient brightness threshold. When set to Disable mode, the daylight sensor will switch on the lamp when motion is detected regardless of ambient light level.
Notice 1: The light threshold can be selected through the slide switch, it may cause a large deviation in different lamps.

Stand-by dimming level:

This is the dimmed low light output level you would like to have after the hold-time in the absence of people.

Stand-by period:

This is the time period you would like to keep at the low light output level before it is completely switched off in the long absence of people.

Functions Instruction (For specific function, please refer to actual model)



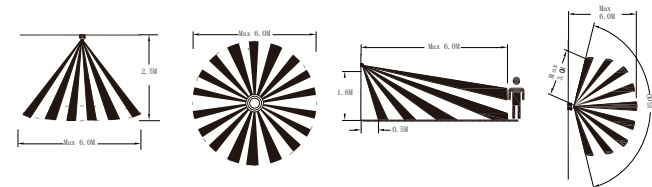
Sensor

Detection area: 90 degree wide
detective beam angle with 2-3 meters distance.

Driver Datasheet (Sensor)

Sensor datasheet	
Operating Voltage	DC6-10V
Power consumption	0.2Wmax
Microwave frequency	-
Transmission power	-
Detection angle	90°
Detection Area	3m (50%/100% Range adjustable)
Hold time	5s/60s/3min/10min adjustable
Daylight sensor	30Lux/Disable Mode adjustable
Stand-by DIM Level	0%/20% Mode adjustable
Stand-by Period	15min/∞ Adjustable
Dimming Range	NO
Microw ave ON/OFF function	After powering on for 40 seconds, do ON-OFF-ON-OFF in 2 seconds, the lamp will flash once, the sensor function will be turned off and lamp will enter into normal constant light status (No memory function). If power off over 2 seconds under constant light mode, the lamp will back to sensor status.
Installation Height	Recommended wall installation height 1.8m, ceiling installation height 2.5m.
Operating temperature(°C)	-20°C~40°C

Induction Range



Technical Helpline
+44 (0)1924 893380

British Electric Lamps Ltd
BELL House, Foxbridge Way, Normanton Industrial Estate
Normanton, West Yorkshire. WF6 1TN
T: +44 (0)1924 893380 F: +44 (0)1924 894320
E: sales@belllighting.co.uk
www.belllighting.co.uk